



# Citizen Science

By: Brynn and Caden Snodgrass

Testable Question:

How does tidal zone affect the types of seaweed present?

## Setup:

We took data along the transect line

We took a presence/absence survey for all of the even plots available (2-24)

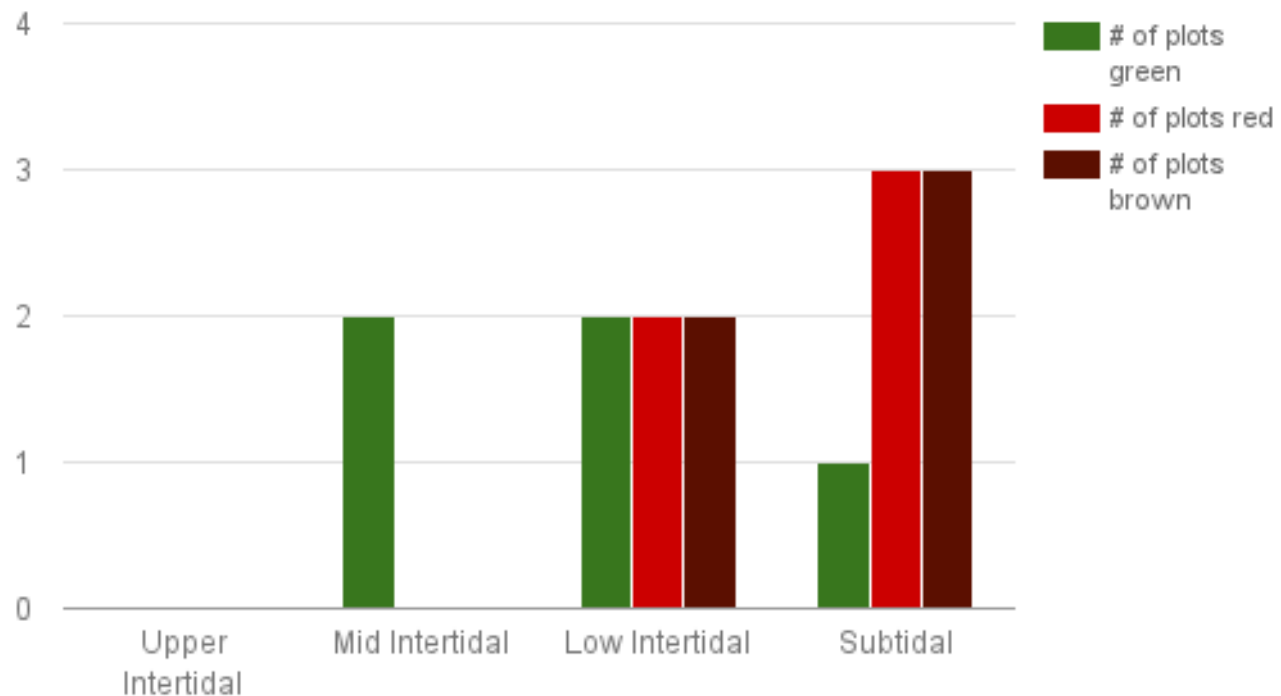
There was a low tide of -2 feet

We only counted attached seaweed as present



Plot #	Greens	Reds	Browns
2			
4			
6			
8	yes		
10			
12	yes		
14	yes		yes
16	yes	yes	
18		yes	yes
20		yes	yes
22	yes	yes	yes
24		yes	yes

## Number of Plots Where Seaweed is Present



# Results:

As you can see, the seaweeds that require less sunlight (the rhodophyta and phaeophyta) are found in the lower tidal zones. This is because less sunlight reaches those areas than in the higher tidal zones. This is also why chlorophyta was not found closer to the water. The green seaweeds need sunlight to thrive and they receive more sunlight in the higher tidal zones.